



Case Study: Commercial

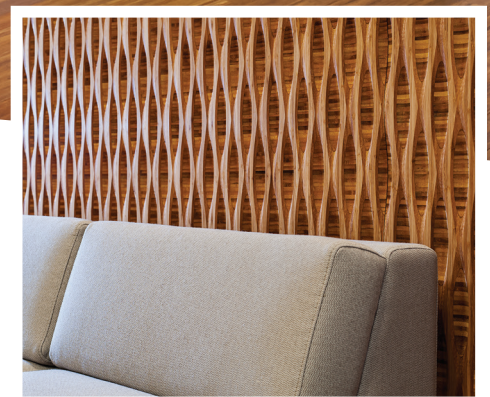
Stantec

Industry:
Commercial

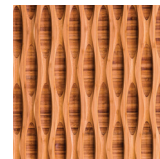
Location:
Boston, MA

Architect:
Stantec

Stantec Architecture was looking for an eye catching wall treatment in a natural material to offset the brick and other architectural elements in the lobby of their Boston, MA offices. They wanted to create a feature wall with both movement and some excitement. A variety of choices were narrowed down to our C5 Reveal panel in Amber with a Penafin Verde nature oil finish. The panels were mounted using our recommended Monarch wall cleating system. The effect hit the spot and Stantec was very pleased with the result.



Materials:



Reveal Collection
Style: C5
Color: Amber



Specifications

Possible LEED Credits:

Low emitting materials and certified wood



Physical/ Mechanical Properties: Reveal Collection

| | |
|--|---|
| Dimensions: | 3/4" x 47 3/4" x 95 3/4" - 19mm x 1213mm x 2432mm |
| Construction: | RealCore™ 3-ply |
| Installation: | Can be used in Walls, Ceilings & Millwork applications |
| ASTM E84: Surface Burning | Class C standard. Can be ordered as Class B and in some cases Class A |
| ASTM D6007-02: Formaldehyde Concentration in Air from Wood Products small chamber test | Plyboo = 0.004 ppm (surpasses CARB II standards, 0.05ppm & ULEF standards of 0.04ppm) |
| Finish: | Penofin Verde Natural Oil (Colors: Natural, Fog, Storm, Mist, Noir) |
| ASTM 4442: Moisture Content | 6-9% average |